



TIIG

INJURY SURVEILLANCE IN THE NORTH WEST OF ENGLAND

Arrowe Park Emergency Department Monthly Bulletin: October 2012 to September 2013

This bulletin provides a breakdown of a total of 36,448 injury attendances at Arrowe Park Hospital Emergency Department (ED) between October 2012 and September 2013. Injury attendances peaked in July (n=3,645), with January (n=2,619) having the least number of injury attendances (**Figure 1**).

For all months there were more male injury attendances than female presenting at Arrowe Park ED (53%) (**Figure 1**). **Figure 2** presents the age group of injury attendances. Across the whole year, injury attendances were highest for individuals aged 30 to 59 years (29%).

Table 1 details the injury group of injury attendees to Arrowe Park ED between October 2012 and September 2013. Falls were the most prevalent cause of injury, accounting for over four in ten (44%) attendances. Just under one in six (15%) injury attendances were recorded as other injury and 11% of injury attendances were as a result of the attendee having been struck.

Table 2 illustrates the source of referral for patients presenting with injuries. The majority (90%) of injury attendees self-referred.

Table 3 presents injury attendances by location of incident. Over a third (36%) injuries were recorded as having occurred in a public place, while just over three in ten (31%) incidents were recorded as having occurred in the home.

Table 4 shows the discharge method of injury attendances. The majority (51%) of attendees were discharged without requiring any follow-up, whilst just over one in ten (12%) attendees were admitted.

A total of 1,460 attendees presented at Arrowe Park ED in this period as a result of assault; these attendees were mainly male (68%) and just over half (51%) aged between 15-29 years.

Four in ten (40%) assaults were recorded as occurring in a public place and 16% were recorded as occurring in the home (**Table 5**).

Table 6 gives the geographical location of assault incidents. Close to three in ten of assault incidents (28%) were reported to have occurred in Birkenhead centre. The majority (60%) of assault victims reported being attacked by one attacker (**Table 7**).

Figure 3 gives detail on whether or not the attendee had consumed alcohol within the three hours prior to the incident. The majority of injury attendees (91%) had not consumed alcohol; however for assault attendees, 49% of attendees reported that they had consumed alcohol.

Table 8 presents details of the injury group for the age groups of 0-4 years and 60 years plus. The majority of injuries in both age groups were reported as falls (0-4 years = 54%; 60 plus years = 73%).

Figure 1: Gender of injury attendances by month, October 2012 to September 2013¹

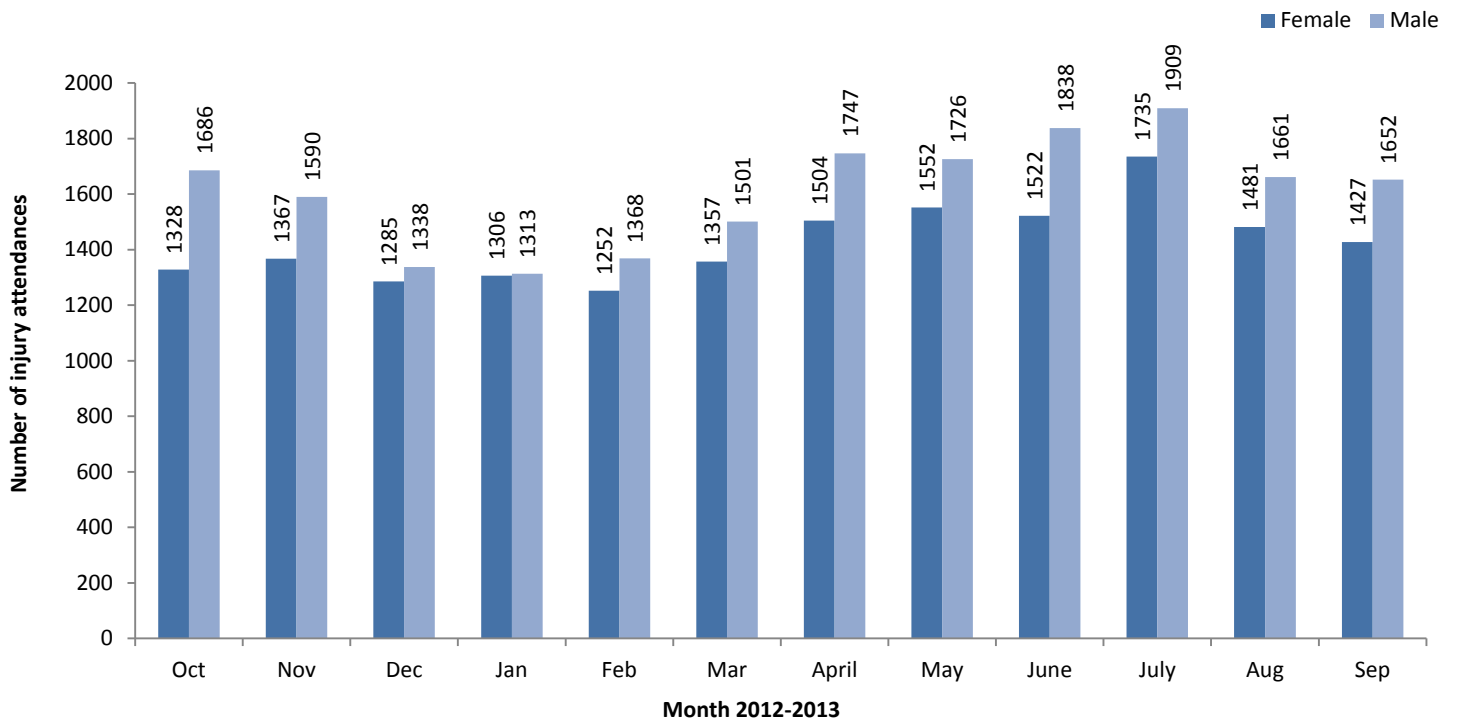
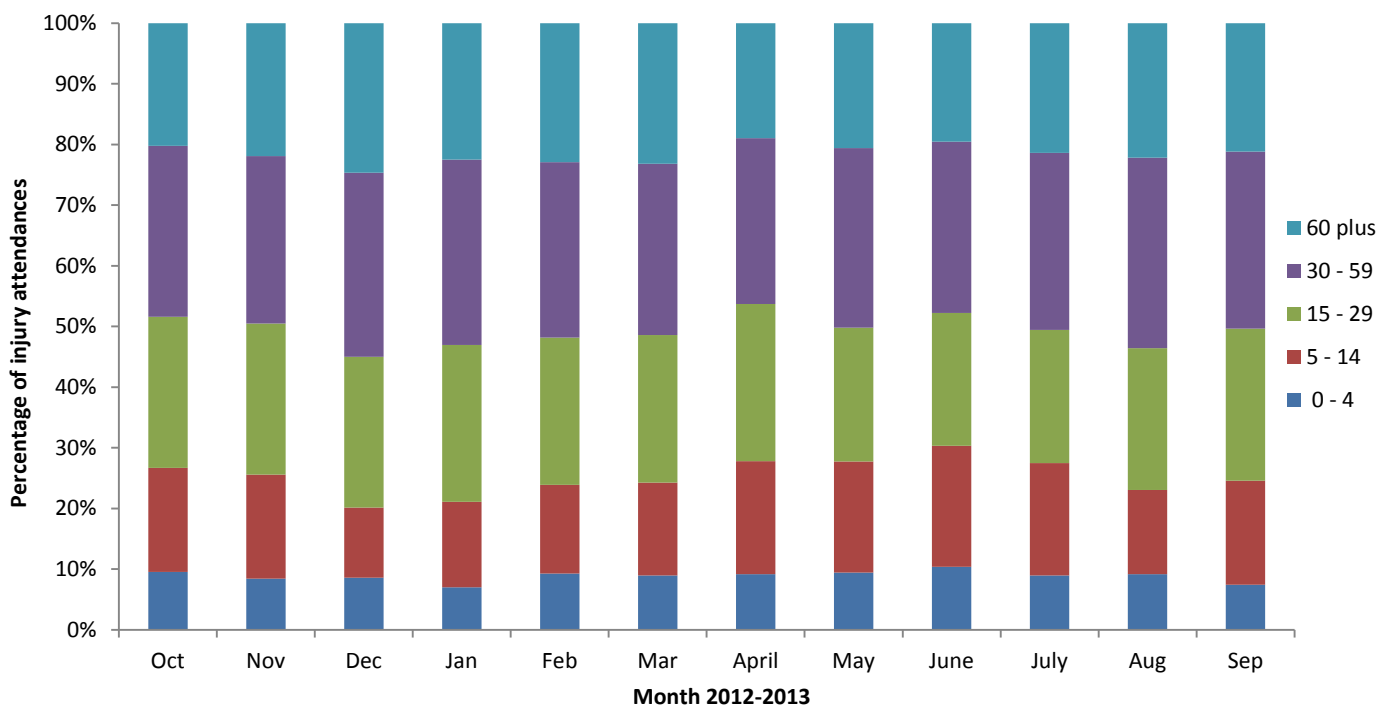


Figure 2: Age group of injury attendances by month, October 2012 to September 2013



¹ Please note there were three attendances where gender was not recorded.

Table 1: Injury attendances by injury group, October 2012 to September 2013²

Injury Group	Oct	Nov	Dec	Jan	Feb	Mar	Apr	May	Jun	Jul	Aug	Sep	Total	%
Fall	1211	1237	1160	1261	1168	1291	1429	1432	1496	1626	1404	1297	16012	44
Other injury	533	409	361	364	375	374	545	509	608	603	507	461	5649	15
Struck	337	359	252	280	297	319	327	396	320	437	398	405	4127	11
Sports injury	305	261	153	145	214	236	345	218	212	224	154	287	2754	8
Wound or cut	220	241	234	187	171	197	210	240	259	277	264	227	2727	7
Road traffic collision	147	211	163	128	172	194	144	211	177	167	153	167	2034	6
Assault	115	113	140	120	103	92	110	140	140	125	134	128	1460	4
Deliberate self-harm	55	50	69	52	49	80	61	45	62	71	55	39	688	2
Burn/scald	38	35	40	38	31	36	35	41	46	50	35	21	446	1
Bite	31	23	34	16	24	25	22	25	25	44	17	25	311	1
Ingestion	16	14	13	9	10	7	12	18	10	13	16	16	154	0
Inhalation	<6	***	***	<20	<10	<10	<15	***	***	<6	***	<6	72	0
Non fire burn/scald	***	***	***	***	***	***	***	***	***	***	***	***	14	0
Total	3014	2958	2623	2619	2620	2858	3251	3278	3360	3645	3143	3079	36448	100

Table 2: Injury attendances by source of referral, October 2012 to September 2013^{2*}

Source of referral	Oct	Nov	Dec	Jan	Feb	Mar	Apr	May	Jun	Jul	Aug	Sep	Total	%
Self-referral	2675	2652	2368	2371	2350	2557	2950	2871	3020	3305	2844	2751	32714	90
Other	157	105	131	82	116	131	91	164	188	173	149	148	1635	4
Emergency services	96	133	73	102	63	92	133	170	59	83	60	81	1145	3
Health care provider	34	39	9	22	26	32	31	28	37	37	43	58	396	1
Police	13	14	21	7	21	20	11	21	17	19	30	15	209	1
Educational establishment	23	<6	10	15	18	9	18	9	19	12	***	16	155	0
GP	12	7	***	17	12	8	12	6	6	5	***	***	97	0
Work	***	***	6	***	13	7	5	8	12	10	12	6	88	0
Unknown	***	***	***	***	***	***	***	***	***	***	***	***	8	0
Community dental service	***	***	***	***	***	***	***	***	***	***	***	***	***	0
Local authority	***	***	***	***	***	***	***	***	***	***	***	***	***	0
Total	3014	2958	2623	2619	2620	2858	3251	3278	3360	3645	3143	3079	36448	100

*GP = General Practitioner

Table 3: Injury attendances by location of incident, October 2012 to September 2013²

Incident location	Oct	Nov	Dec	Jan	Feb	Mar	Apr	May	Jun	Jul	Aug	Sep	Total	%
Public place	1238	1023	948	955	903	1058	1134	1124	1149	1338	1157	974	13001	36
Home	866	918	896	881	869	932	962	995	999	1046	931	827	11122	31
Other	411	504	493	411	436	432	591	748	751	862	817	828	7284	20
Sport	142	165	56	109	169	157	277	150	154	161	153	212	1905	5
Educational establishment	203	234	<130	137	145	170	170	157	168	135	***	158	1805	5
Workplace	137	108	96	119	94	100	106	95	132	90	77	70	1224	3
Unknown	13	***	***	***	***	6	7	5	***	***	***	5	59	0
Sea/waterway	***	***	***	***	***	***	***	***	***	11	***	***	<45	0
Road traffic accident	***	***	***	***	***	***	***	***	***	***	***	***	***	0
Total	3014	2958	2623	2619	2620	2858	3251	3278	3360	3645	3143	3079	36448	100

² Please note that in all tables all numbers less than five have been suppressed in line with patient confidentiality and if there is only one number in a category then two numbers will be suppressed at the next level (e.g. <6) in order to prevent back calculations from totals.

Table 4: Injury attendances by discharge method, October 2012 to September 2013³

Discharge method	Oct	Nov	Dec	Jan	Feb	Mar	Apr	May	Jun	Jul	Aug	Sep	Total	%
Discharged - no follow-up	1537	1574	1226	1352	1362	1492	1642	1750	1732	1890	1537	1562	18656	51
Admitted	362	333	395	333	342	401	337	355	392	406	397	362	4415	12
Discharged - fracture clinic	300	274	265	297	275	312	380	366	406	443	356	322	3996	11
Discharged - GP follow-up	236	247	264	258	289	283	356	274	282	271	343	273	3376	9
Discharged - other	141	150	100	106	67	87	112	112	123	143	104	113	1358	4
Discharged - adult ED clinic	100	73	63	67	67	77	83	108	98	87	82	90	995	3
Left before assessment	76	82	91	43	75	62	78	63	60	95	87	113	925	3
Discharged - GP nurse	102	77	72	10	***	5	92	90	89	122	88	70	821	2
Discharged - paediatric ED	53	32	21	45	44	41	61	44	57	46	34	43	521	1
Discharged - ear, nose and throat	26	27	25	20	20	15	20	18	22	24	16	29	262	1
Discharged - maxillary/facial	25	27	21	16	18	18	24	10	23	22	22	26	252	1
Transferred to other healthcare provider	22	18	17	16	20	14	16	23	16	16	21	25	224	1
Left department	12	13	26	23	7	17	18	24	25	23	18	16	222	1
Discharged - physiotherapy	6	12	9	11	12	15	16	25	13	17	14	14	164	0
Discharged - walk-in centre	9	8	20	14	10	12	10	16	15	20	9	6	149	0
Unknown	<10	<15	<10	<10	<10	<10	***	***	<10	<20	<20	<20	105	0
Died in department	***	***	***	***	***	***	***	***	***	***	***	***	7	0
Total	3104	3584	3101	3409	3048	3237	3014	2958	2623	2619	2620	2858	36448	100

*GP=General Practitioner

Table 5: Assault attendances by location of assault, October 2012 to September 2013³

Assault location	Oct	Nov	Dec	Jan	Feb	Mar	Apr	May	Jun	Jul	Aug	Sep	Total	%
Public space	51	45	48	48	41	37	48	38	57	57	58	54	582	40
Home	21	14	19	18	12	12	24	34	22	21	19	18	234	16
Street/road	8	23	27	18	19	8	10	22	23	17	22	19	216	15
Other	13	6	14	10	8	9	7	12	10	9	5	6	109	7
Public house	5	5	10	12	8	6	***	7	6	***	6	10	80	5
Night club	5	5	12	***	***	7	5	***	***	***	8	***	59	4
Public park	***	8	***	***	***	***	***	7	10	5	5	6	55	4
Workplace	***	5	***	***	***	***	***	10	***	5	7	6	48	3
School	***	***	***	***	***	5	***	***	***	***	***	***	23	2
Railway station	***	***	***	***	***	***	***	***	***	***	***	***	13	1
Leisure facility	***	***	***	***	***	***	***	***	***	***	***	***	11	1
Hospital	***	***	***	***	***	***	***	***	***	***	***	***	9	1
Shops	***	***	***	***	***	***	***	***	***	***	***	***	8	1
Unknown	***	***	***	***	***	***	***	***	***	***	***	***	6	0
Details withheld by patient	***	***	***	***	***	***	***	***	***	***	***	***	***	0
On public transport	***	***	***	***	***	***	***	***	***	***	***	***	***	0
Total	115	113	140	120	103	92	110	140	140	125	134	128	1460	100

³ Please note that in all tables all numbers less than five have been suppressed in line with patient confidentiality and if there is only one number in a category then two numbers will be suppressed at the next level (e.g. <6) in order to prevent back calculations from totals.

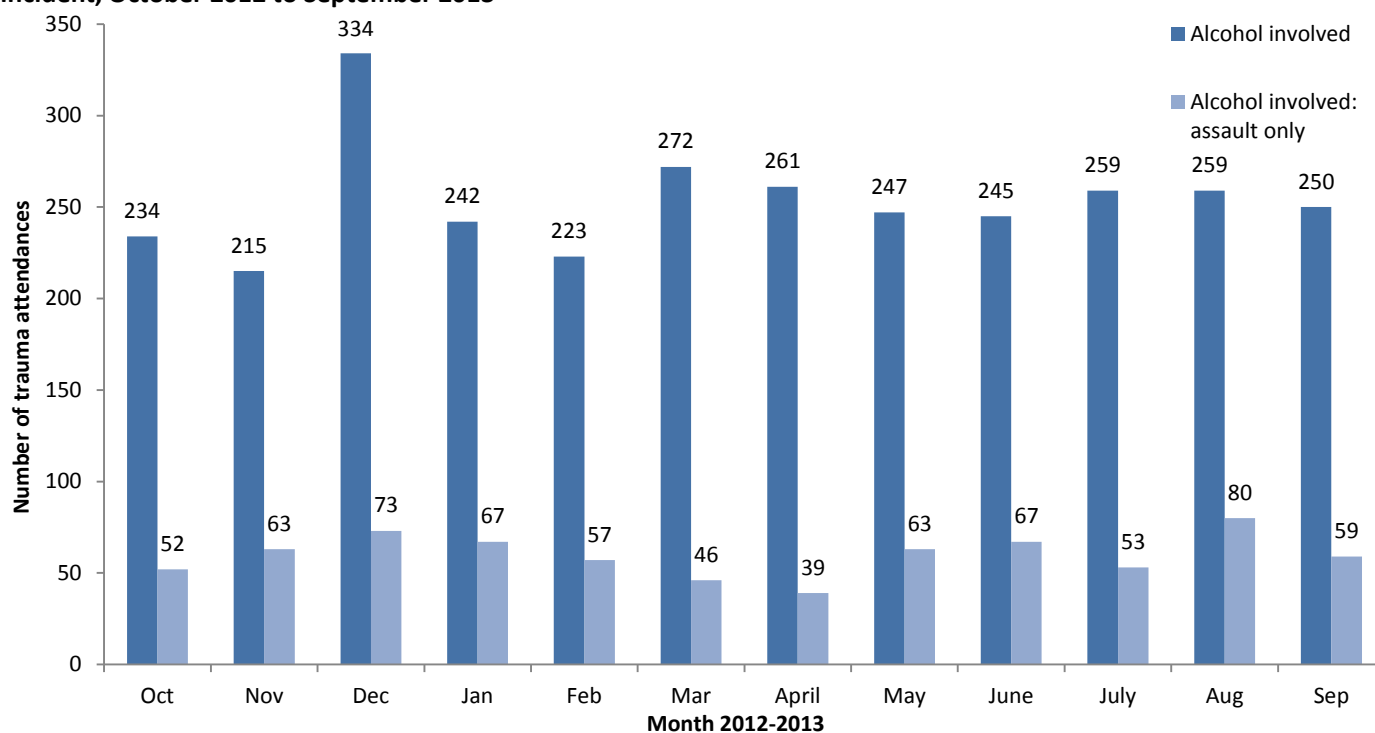
Table 6: Assault attendances by geographical location of assault, October 2012 to September 2013⁴

Geographical assault location	Oct	Nov	Dec	Jan	Feb	Mar	Apr	May	Jun	Jul	Aug	Sep	Total	%
Birkenhead centre	24	30	41	34	26	35	29	33	49	32	36	44	413	28
Wallasey-Seacombe	15	17	14	11	19	11	17	13	20	19	19	14	189	13
Other	11	10	8	7	15	8	17	19	9	12	13	13	142	10
New Ferry-Rock Ferry	10	***	8	<6	7	7	7	13	12	9	12	9	103	7
Bidston-Prenton-Oxton	10	9	15	10	***	***	5	7	11	11	9	***	97	7
Greasby-Upton-Arrowe Park	6	9	6	7	7	***	6	14	7	***	6	12	87	6
Liverpool city centre	***	7	11	12	7	10	***	***	***	7	6	6	82	6
Moreton-Leasowe	12	7	6	***	9	***	7	9	6	7	6	5	77	5
Bromborough-Eastham	5	***	6	***	***	***	6	***	5	7	***	7	58	4
New Brighton	***	***	9	6	***	***	***	7	5	***	5	5	54	4
Bebington	5	***	5	***	***	***	5	***	***	***	6	***	45	3
Heswall-Pensby-Thingwall	5	5	***	10	***	***	***	5	***	***	5	***	42	3
West Kirby	***	***	***	***	***	***	***	5	***	5	***	***	26	2
Meols-Frankby-Hoylake	***	***	***	***	***	***	***	***	***	***	***	***	15	1
Neston-Parkgate	***	***	***	***	***	***	***	***	***	***	***	***	15	1
Refused to answer	***	***	***	***	***	***	***	***	***	***	***	***	6	0
Unknown	***	***	***	***	***	***	***	***	***	***	***	***	<6	0
Ellesmere Port-Cheshire Oaks	***	***	***	***	***	***	***	***	***	***	***	***	***	0
Total	115	113	140	120	103	92	110	140	140	125	134	128	1460	100

Table 7: Assault attendances by number of attackers, October 2012 to September 2013⁴

Number of attackers	Apr	May	Jun	Jul	Aug	Sep	Oct	Nov	Dec	Jan	Feb	Mar	Total	%
1 attacker	84	69	80	65	69	55	66	95	80	72	65	76	876	60
More than 2	15	26	41	39	18	19	24	30	37	31	39	27	346	24
2 attackers	<15	10	12	8	8	10	9	8	14	<20	9	10	127	9
Unknown	***	8	7	8	8	8	11	7	9	<6	21	15	111	8
Total	115	113	140	120	103	92	110	140	140	125	134	128	1460	100

Figure 3: Injury and assault attendances by whether alcohol had been consumed within three hours prior to the incident, October 2012 to September 2013



⁴ Please note that in all tables all numbers less than five have been suppressed in line with patient confidentiality and if there is only one number in a category then two numbers will be suppressed at the next level (e.g. <6) in order to prevent back calculations from totals.

Table 8: Injury group of attendees aged 0-4 and 60 years plus only, October 2012 to September 2013⁵

Injury group	0-4		60 plus	
	N	%	N	%
Assault	***	0	49	1
Bite	33	1	46	1
Burn	120	4	47	1
Drown/immersion	***	0	0	0
Deliberate self-harm	0	0	38	0
Electrical	***	0	***	0
Fall	1758	54	5754	73
Firearm	0	0	***	0
Firework	0	0	0	0
Glass	***	0	0	0
Ingestion	95	3	20	0
Inhalation	5	0	27	0
Non-drown asphyxia	0	0	0	0
Non-fire burn/scald	0	0	0	0
Other	554	17	706	9
Road traffic collision	97	3	215	3
Sports injury	***	0	27	0
Stab	***	0	***	0
Struck	354	11	373	5
Wound or cut	220	7	525	7
Total	3247	100	7831	100

Published November 2013

Jennifer Brizell (TIIG researcher)

Centre for Public Health, Faculty of Education, Health and Community, Liverpool John Moores University
2nd Floor, Henry Cotton Campus, 15-21 Webster Street, Liverpool, L3 2ET

Tel: 0151 231 4500 Email: j.s.brizell@ljmu.ac.uk

Website: www.tiig.info (please note all data requests should be made through the TIIG website)

Twitter: [@TIIG_CPH](https://twitter.com/TIIG_CPH)

⁵ Please note that in all tables all numbers less than five have been suppressed in line with patient confidentiality and if there is only one number in a category then two numbers will be suppressed at the next level (e.g. <6) in order to prevent back calculations from totals.